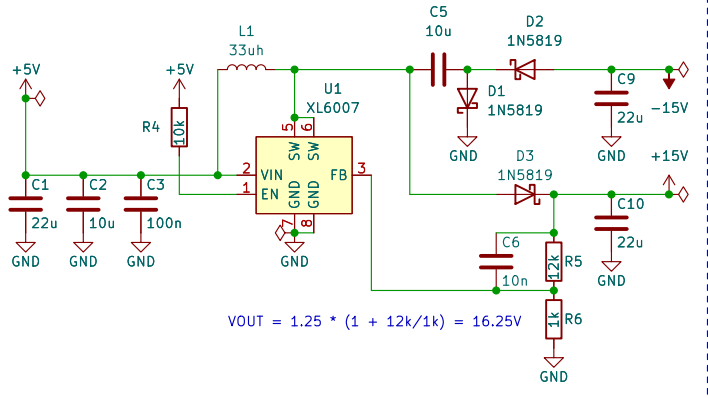
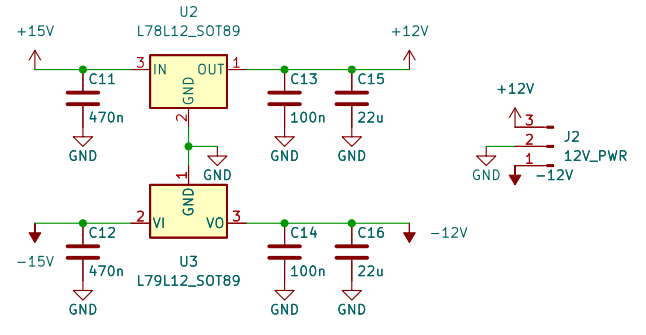


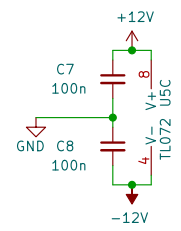
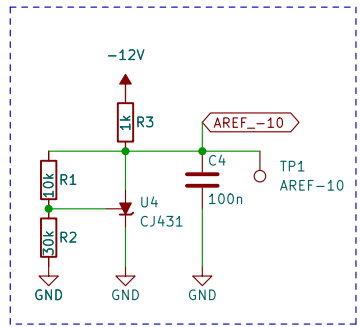
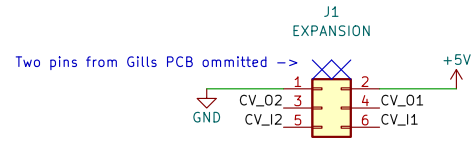
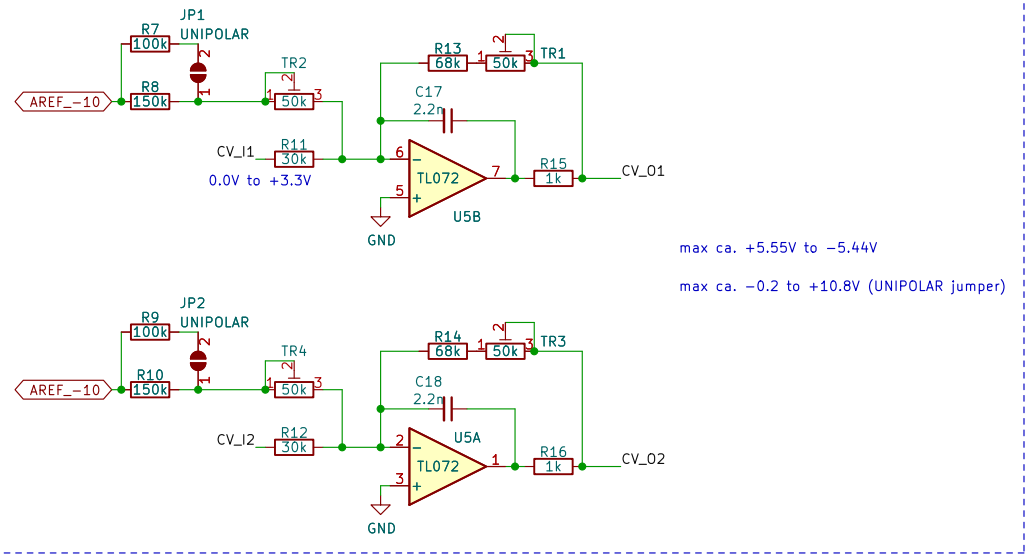
STEP-UP POWER



BIPOLAR REGULATED POWER



SIGNAL SCALE/OFFSET



○ FID1 Fiducial ○ FID2 Fiducial

changelog		CHANGELOG	
[Redacted]			
Sheet: /		File: changelog.kicad_sch	
File: ksoloti_gills_cv_expander_v03.kicad_sch			
Title:			
Size: A4	Date:	Rev: v0.2	
KiCad E.D.A. kicad (6.0.11)		Id: 1/2	

v0.2 done, ordered 2023/9/11

v0.3 done, ordered 2023/10/23

- Increase 7xL12 regulator caps to 22uf
- Increase XL6007 output to 16.25V
- Adjust opamp resistors to more common values
- Increase board dimensions
- Add -10V reference test point
- Add two fiducials

v0.3 done, production

Sheet: /changelog/ File: changelog.kicad_sch	
Title:	
Size: A4	Date:
KiCad E.D.A. kicad (6.0.11)	Id: 2/2